

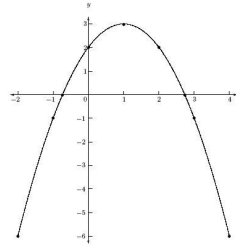
Name: _____

Homework – Monday (November 5, 2018)

Solve the following problems **without a calculator**. You **MUST** show your work. **NO WORK = NO CREDIT**.

1. What is the definition of a function? Write your answer in a complete sentence.

2. Is the graph of the relation also a function? Explain.



3. Determine which relation is a function. Circle the letter.

- a. (22,0) (21,0) (22,2)
- b. (53,1) (1,54) (-53, 2)
- c. (32,8) (45,7) (45,2)
- d. (53,35) (35,14) (53,15)

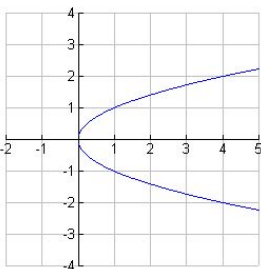
4. Is the relation a function? Explain.

x	y
-2	10
2	20
6	30

Homework- Tuesday (November 6, 2018)

Solve the following problems **without a calculator**. You **MUST** show your work. **NO WORK = NO CREDIT**.

4. Is the graph of the relation also a function? Explain.



1. Determine which relation is NOT a function. Circle the letter.

- a. (-22,0) (21,0) (22,2)
- b. (-53,1) (-1,54) (-53, 2)
- c. (32,-8) (-45,7) (45,2)
- d. (-53,35) (35,14) (53,15)

3. Denise ran 11 laps around the track on her first day of practice. On the second day, she ran 15 laps, and on the third day, she ran 19 laps. How many laps will Denise run during the next 4 days?

_____ day 4 _____ day 5 _____ day 6 _____ day 7

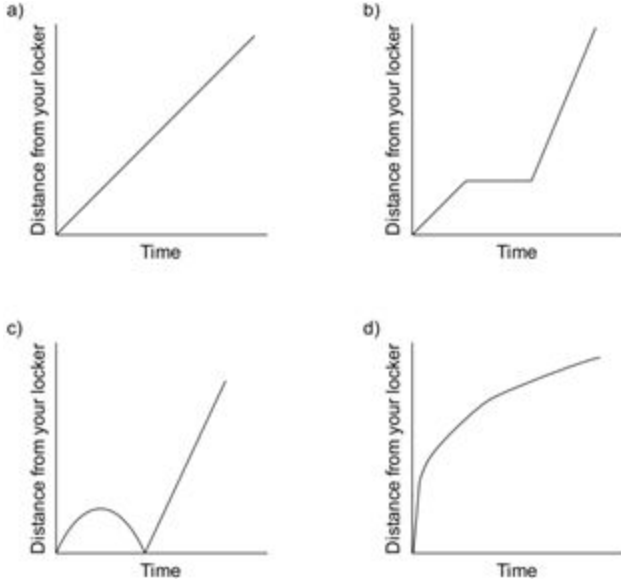
4. Is the relation a function? Explain.

x	y
2	10
4	10
6	10

Homework – Wednesday (November 7, 2018)

Solve the following problems **without a calculator**. You **MUST** show your work. **NO WORK = NO CREDIT.**

PROBLEM



- I started to walk to class, but I realized I had forgotten my notebook, so I went back to my locker and then I went quickly at a constant rate to class.
- I was rushing to get to class when I realized I wasn't really late, so I slowed down a bit.
- I started walking at a steady, slow, constant rate to my class, and then, realizing I was late, I ran the rest of the way at a steady, faster rate.

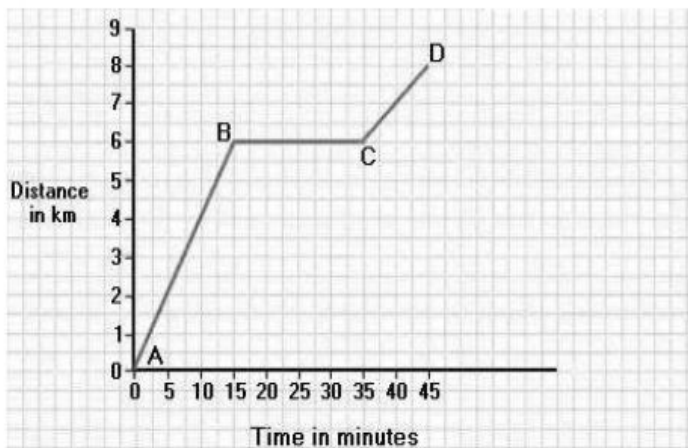
QUESTIONS

1. What are the 2 variables in the graphs?
2. Which graph does the situation explain?
3. Explain (in several sentences) why you chose this answer.

Homework- Thursday (November 8, 2018)

Solve the following problems **without a calculator**. You **MUST** show your work. **NO WORK = NO CREDIT.**

PROBLEM



QUESTIONS

1. What are the 2 variables in the graph?
2. What story does the graph tell you as you ride your bike to your friend's house? Explain in detail.